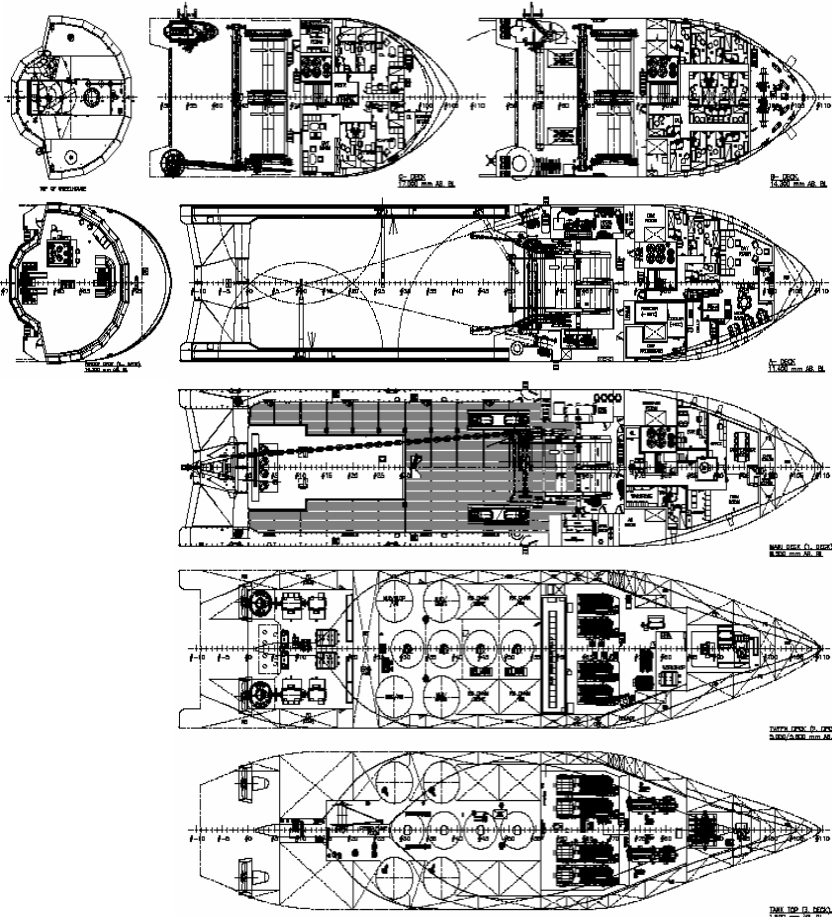




DP 2 anchor handling tug supply vessel

BOURBON ORCA

181 Metric ton bollard pull
400 Metric ton line pull winch



This ULSTEIN AX 104 is a Diesel electric AHTS for anchor handling, tug and supply services designed to meet the future demands of offshore industry.

Designed with ULSTEIN Xbow, this vessel surpasses industry standards with regards to cargo capacities and performance, and fully complies with requirements for energy efficiency and conservation.

It is fitted with a DP 2 class.

It is equipped with 2 drums waterfall type for towing/working, and 1 drum for anchor handling with large capacities, as well as 2 secondary drums.

30-10-2006



DP 2 anchor handling tug supply vessel

BOURBON ORCA

19,914 bhp

MAIN CHARACTERISTICS

Length overall:86.20 m.
Breadth moulded:18.50 m.
Depth main deck:8.50 m.
Max draft:7.00 m
Deadweight at max draft:3,180 t.
Deck cargo :1,200 t.
Cargo deck area: 540 m² (35.00 x 15.40 m) @ 10.0 t/m²
Bollard pull:181 t.
Gross/Net tonnage:4,089 / 1,226

REGISTRATION

Type:AHTS: DP2 supply vessel AX104 ULSTEIN Design AS.
Owner:Bourbon Offshore Norway.
Delivery: ...2006.
Builder:Ulstein Verft AS (Norway).
Flag:Norwegian.
Class:DNV. ✚ 1A1, Supply Vessel, Tug, SF, EO, DYNPOS AUTR,
CLEAN, COMF-V(3), DK(+), HL(+), NAUT-OSV (LOC).
NLS certificate.

PERFORMANCE

Trial speed:17.1 knots.

ACCOMMODATION

- Fully air-conditioned.
- Accommodation for 34 persons composed of:
 - 14x single cabins, 10x 2 man cabins.
- Office and conference room, 1 hospital, 1 mess rooms, 2 day rooms, laundry, galley, provision rooms, stores.

PROPULSION - MACHINERY

- **Main generator engines:** 4x 2,880 kW at 720 rpm. (11,520 kW).
2x 1,665 kW at 900 rpm. (3,330 kW).
- **Main propulsion:** 2x 5,000 kW steerable thrusters in nozzles, cpp, variable speed at 0-173 rpm. dia: 3,600 mm.
- **Tandem electric propulsion motors arrangement:**
 - 2x 3,000 kW, variable speed, 0 - 3,000 kW at 0-720 rpm,
 - 2x 2,000 kW, fixed speed.
- **Emergency generator:** 1x 315 kW.

THRUSTERS

- **Bow thrusters:** 1x 1,200 kW tunnel, electrically driven,
1 Retractable steerable thruster, 1,800 kW, electrically driven.

TOWING/ANCHOR HANDLING WINCH

- **Main winch:** 1 electro-hydraulic winch composed of 3 drums in waterfall arrangement, consisting of:
Towing/working: 2 drums: dia. 1,500/3,200 x 2,300 mm length.
 - Wire capacity: 2,500 m of 3".
 - Brake holding load: 500 mt on 1st layer.
 - Duty in hoist: 400 mt on 1st layer at 0 - 18.7 m/min.
 - Duty dynamic braking: 90 - 480 mt at 0 - 88 m/min.**Anchor handling:** 1drum: dia. 1,500/3,200 x 4,570 + 900 mm.
 - Wire capacity: 5,000 m of 3" + 900 m of 3" socket compartment.
 - Duty in hoist: 400 mt on 1st layer at 0 - 18.7 m/min.
 - Duty dynamic braking: 90 - 480 mt at 0 - 88 m/min.**Secondary winch:** 1drum: dia. 1,500/3,200 x 4,500 + 900 mm.
 - Wire capacity: 4,000 m of 3" + 1,000 m of 3" socket compartment.
 - Capacity: 1,600 m of 8" synthetic rope.
 - Duty in hoist: 138 mt on 1st layer at 0 - 43 m/min.
 - Duty dynamic braking: 170 mt at 0 - 70 m/min.
- **Storage winch:** spare tow wire, 1,600 m of 3" wire rope, 10 mt pull.
- **ODIM safe anchor handling system (SAHS):**
 - 2 tugger cranes, travelling on top of cargo rail, with UPU, tugger winch 15 t, crane winch 3 t.
 - Twin stern rollers system: (twin inboard) dia.2,000 x 3,000 length.
(twin outboard) dia.2,000 x 2,000 length
- **Towing pins:** 4 with flaps for horizontal locking, dia. 450 mm.
- **Shark jaws:** 2 of 500 mt SWL, dia. 500 mm.
- **Tuggers:** 2x 20 mt.
- **Windlass:** 1 combined windlass/mooring winch.
- **Roll damping system:** 2 passive roll reduction tanks.

TANK CAPACITIES & PUMPS

BW/DW:2,482 m³ ...Pump 2x250m³/h at 9 bars.
Fuel oil:1,486 m³ ...Pump 1x 250 m³/h at 9 bars.
Base oil:447 m³ ...Pump 1x 100 m³/h at 9 bars.
Dry bulk: (4 tanks).....254 m³ ...Comp. 2x 1,800m³/h at 5,6 bars.
Fresh water:503 m³ ...Pump 1x 150 m³/h at 9 bars.
Liquid mud: (4 tanks).....530 m³ ...Pump 2x 75 m³/h at 24 bars.
Brine:558 m³ ...Pump 2x 75 m³/h at 24 bars.
Slop:167 m³ ...Pump 1x 50 m³/h at 5 bars.
Rig chain: (4 lockers).....626 m³

ELECTRONICS

• NAVIGATION & COMMUNICATION

- 1 radar S-band ARPA, 1 radar X-band ARPA,
- 1 digital chart system ECDIS (duplo),
- Conning station, VDR, AIS,
- 1 GPS,
- 3 gyrocompasses (combined use with DP system),
- 1 INMARSAT F 77 with fax,
- 1 Complete GMDSS area A3 radio installation including:
Satcom C, Satcom F,
- 1 Automatic identification system AIS,
- E-mail and on-board computer network system,
- Internal ULSTEIN COM. Automatic exchange telephone system with facilities in each room and offices, satellite TV antenna.
- Telephone system, separate PA system, DECT.

DYNAMIC POSITIONING SYSTEM (DP 2)

- Comply with DNV class notation DYNAPOS AUTR class II.
 - System allowing: Joystick, Automatic tracking, dynamic positioning, automatic speed control.
 - Reference system: 1 DGPS 700, 1 laser reference system.
 - Sensors: 2 gyrocompasses, 2 wind sensors, 2 motion reference units.
 - Prepared for hydro acoustic reference unit with ND 500.

SPECIAL EQUIPMENT

- **Life saving arrangement:** 1 Fast rescue craft (water jet) with davit,
 - 6 Life rafts for 20 persons each, with equipment,
 - Lifebuoys, life Jackets.
- **Deck cranes:** 1 knuckle boom crane, 10 t @ 16 m. (DAF 1.3)
2 travelling deck crane, 3 t @ 10 m.

All particulars believed to be correct but not guaranteed.

Bourbon Offshore

148, rue Sainte - 13007 Marseille - France

Phone +33 (0)4 91 13 08 00 - Fax +33 (0)4 91 13 08 61

www.bourbon-online.com - E-mail: bourbon-offshore@bourbon-online.com