



BOURBON HAMOS

DP 2 diesel electric platform support vessel
for deep water operations
with methanol transport capacity
3,340 t deadweight



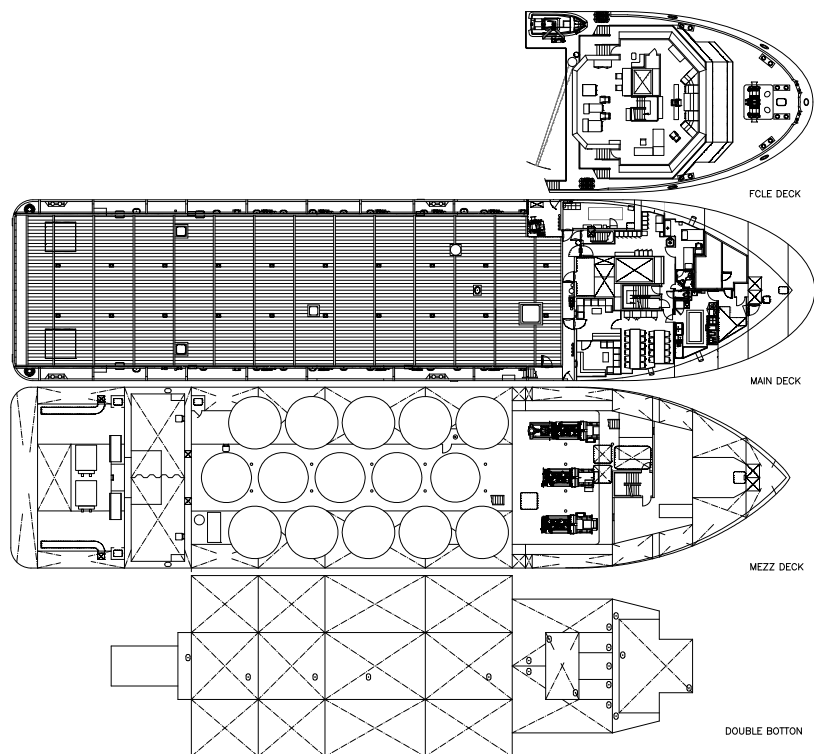
The BOURBON HAMOS, is a GPA 670 PSV designed in conjunction with Guido Perla & Associates of Seattle, Washington. This environmentally friendly diesel electric vessel uses less fuel than conventional direct-drive propulsion vessels and produces far less pollution. The vessel is also classed DP11.

The GPA 670 design allows for greater tank and delivery capacity to compete with vessel larger than it.

The vessel is designed for world-wide, deep water and shallow water operations to fulfill the following duties:

- Transportation of liquid products, deck cargo and other equipment for drilling and production support.

« Photo: «BOURBON HERMES» Sistership of «BOURBON HAMOS».



PLATFORM SUPPLY VESSEL

REGISTRATION

Vessel Name: **BOURBON HAMOS**

Type: **DP2 PSV, GPA 670 MkII methanol**

Year: **2008**

Flag: **Singapor** / Owner: **Bourbon Offshore**

Updated: 12-04-2010

Builder: **Zhejiang (China)**

Class: **BV 1 + HULL, + MACH, Unrestricted Navigation,**

Supply Vessel-Oil product, Fire-fighting ship 1, Water spray,

+AUT-UMS, +DYNAPOS AM-AT-R (class 2).



MAIN PARTICULARS

DIMENSIONS

Length overall:	73.20m
Breadth moulded:	16.50m
Depth:	6.80m
Draft:	5.50 m
Deadweight:	3,340 t
Gross tonnage:	2,337
Net tonnage:	701

CAPACITIES

Deck area:	(50,30 x 13,70) 689 m2 with 5 t/m2
Deck cargo:	1,600 t
Fuel oil:	966 m3
Fuel oil/Cargo tank (combined):	2,150 m3
Ship's service FO:	101 m3
Drill/ballast water:	373 m3
Drill/ballast water/cargo tank (combined):	1,456 m3
Fresh water:	656 m3
Liquid Products:	1,083 m3
Base oil:	198 m3
Dry bulk:	255 m3
Special product-Methanol:	171 m3

DELIVERY RATES

Fuel oil:	150 m3/h at 9 bars
Drill water:	150 m3/h at 9 bars
Fresh water:	150 m3/h at 9 bars
Liquid Products:	2 x 75 m3/h at 15 bars
Base oil:	150 m3/h at 9 bars
Bulk material:	2 x 50 t/h at 6 bars

ACCOMMODATIONS

Accommodations for:	24 pers
Single cabins:	6
2 man cabins:	5
4 man cabins:	2
Hospital:	1
Mess / day rooms, laundry, galley, stores	
fully air conditioned.	

MACHINERY / PERFORMANCE

PROPULSION - MACHINERY

Main engines:	3 x 1,825 kW
Propellers:	Z drive, fixed pitch, 360 degrees
Bow thrusters:	2 x 746 kW Tunnel
Auxilliary generators:	2 x 1,920 kW
Emergency generator:	250 kW

SPEED / CONSUMPTION

Maximum speed (100%):	13 knots
-----------------------	----------

EQUIPMENT & ELECTRONICS

DYNAMIC POSITIONING SYSTEM

Type:	Class 2
-Sensors and monitoring as per class 2 requirements	
-1 vertical reference unit.	

DECK EQUIPMENT

Tugger:	1 x 10 t
Capstans:	2 x 8 t
Deck provisions crane:	2 t at 16 m
Roll reduction System.	

SAFETY EQUIPMENT

Fire Fighting (Fifi 1) (2 pumps of 1,500 m3/h and 2 monitors)
Life saving arrangement.
Stand by rescue equipment.
Remote control and monitoring of main cargo systems.

ELECTRONICS

- NAVIGATION

2 radars
2 gyrocompasses
1 magnetic compass
1 digital echo-sounder
1 speed log
1 autopilot system
1 GPS (and 2 DGPS)

- COMMUNICATION

1 radio system compliant with GMDSS A3
1 Inmarsat F 77
1 iridium

All particulars believed to be correct but not guaranteed